

4 New Street, Mildenhall, Suffolk, IP28 7EN
Tel: 01638 712132
mildenhall@shiresestateagents.co.uk
www.shiresresidential.com

shires

Estate & Letting Agents



Hall Street, Ely, Cambridgeshire, CB7 5BN

Rent - £900 PCM

Deposit - £1,038

This well-presented first-floor flat is located in the sought-after village of Soham, offering convenient access to nearby RAF bases and a direct train line to London.

The property features two generously sized bedrooms, a spacious lounge, a fitted kitchen, and a modern bathroom.

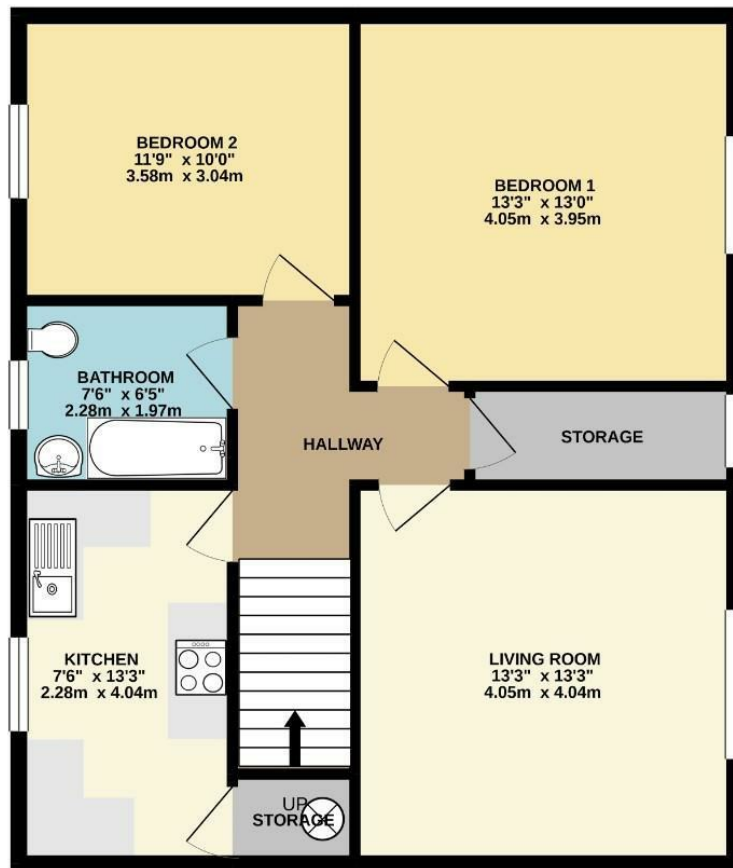
Outside, there is an enclosed garden and allocated parking, making it an ideal choice for professionals, small families, or military personnel seeking a well-connected home in a popular location.

- FIRST FLOOR FLAT
- 2 BEDROOMS
- SPACIOUS LOUNGE
- FAMILY BATHROOM
- GARDEN & PARKING
- OFTEN REQUESTED VILLAGE LOCATION
- GAS HEATING
- APPROXIMATE SIZE - 743 SQ FT
- PETS CONSIDERED
- AVAILABLE



Council Tax Band: A - EPC Rating: D 64

GROUND FLOOR
743 sq.ft. (69.0 sq.m.) approx.



TOTAL FLOOR AREA : 743 sq.ft. (69.0 sq.m.) approx.
Whilst every attempt has been made to ensure the accuracy of the floorplan contained here, measurements of doors, windows, rooms and any other items are approximate and no responsibility is taken for any error, omission or mis-statement. This plan is for illustrative purposes only and should be used as such by any prospective purchaser. The services, systems and appliances shown have not been tested and no guarantee as to their operability or efficiency can be given.
Made with Metropix ©2021

